

In His Name The Most High

Activities in Iran

By:

M. J. Abedini

*School of Engineering
Shiraz University
Shiraz, Iran*



➤ *Outline of Presentation*

- ✓ *What is local problem?*
- ✓ *What are the requirements (data, tools, training)*
- ✓ *How the local problems were solved?*
- ✓ *What capacity building are being made in my country?*
- ✓ *Need for automatic watershed monitoring*

➤ *What is local problem?*

- ❖ *Too much water: FLOOD*
- ❖ *Too little water: DROUGHT*
- ❖ *Lack of coordination in watershed management*
- ❖ *Lack of comprehensive plan(s) to manage multiple water resources*
- ❖ *Higher vulnerability of LDCs to natural disasters*

➤ *Higher vulnerability of LDCs to*

- ✓ *Variety of climate regime*
- ✓ *Unstable landforms*
- ✓ *Population density*
- ✓ *Poverty*
- ✓ *Illiteracy*
- ✓ *Lack of infrastructure development*

➤ *What are the requirements?*

- ❖ *Continuous watershed monitoring*
- ❖ *Legal framework*
- ❖ *Allocation of government spending*
- ❖ *Development of processes to build culture of cooperation and understanding among org. Involved*

➤ *How the local problems were solved?*

❖ *Establishing legal framework*

❖ *Allocating government fund*

- *To manage water resources*
- *To promote joint efforts of basin-level actions*
- *To promote education and training of personnel*
- *To promote participation of various stakeholders*

➤ *What capacity building are being made?*

❖ *Development and coordination of water for*

❖ *Irrigation*

❖ *Industry*

❖ *Urban usage*

❖ *Hydroelectric power generation*

❖ *Environmental conservation*

❖ *Participation of stakeholders and ...*

نقشه توپوگرافی حوضه آبخیز رودخانه خشک شیراز

سازمان جهاد کشاورزی استان فارس

مدیریت آبخیزداری

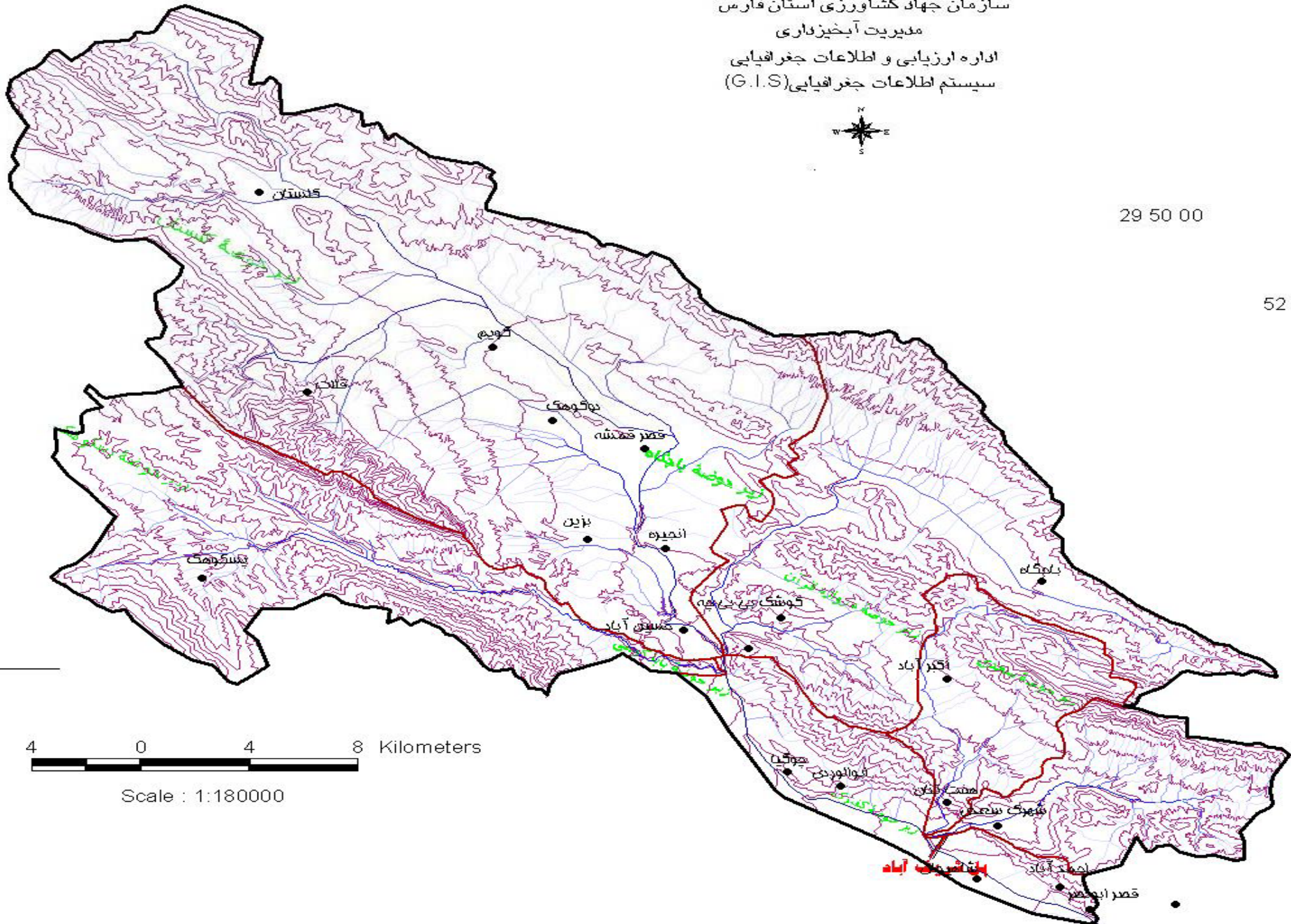
اداره ارزیابی و اطلاعات جغرافیایی

سیستم اطلاعات جغرافیایی (G.I.S)



29 50 00

52 45



4 0 4 8 Kilometers

Scale : 1:180000

➤ *Component of hydrograph monitoring*

❖ *Water level sensing*

❖ *Recording data*

❖ *Transmitting data via tel. line*

❖ *Editing and storing*

❖ *Retrieving data*



- Home
- Data
- Map
- Software
- Publications
- Contact Us

Powered by :
School of engineering
Shiraz University
Designed by Arash Yazdani

قرآن سوره انبیا آیه 30 :: Qoran : 021:030

And we made from water every living things

About www.water.ir



Real-time data are recorded at 15 minute intervals, stored onsite, and then transmitted to School of Engineering GIS Lab every 2 hours via Telephone line. Recording and transmission times may be more frequent during critical events such as floods.



Water Information By Province:
استان های ایران



➤ *Future plan*

- ❖ *Automating tipping-bucket raingauges*
- ❖ *Automating evaporation pans*
- ❖ *Ground water monitoring*
- ❖ *Water quality monitoring*